



BIENNIAL REPORT

ARKANSAS DEPARTMENT OF LABOR & LICENSING

ARKANSAS WORKERS' COMPENSATION COMMISSION



Biennium
2022-2023
2023-2024



ARKANSAS
WORKERS' COMPENSATION
COMMISSION
BIENNIAL REPORT
FOR FISCAL YEARS
2023 & 2024

SARAH HUCKABEE SANDERS, GOVERNOR

DARYL BASSETT, SECRETARY

Scotty Dale Douthit, Chairman
Scott Willhite, Commissioner
Michael Mayton, Commissioner

Mark McGuire, CEO

Table of Contents

Mission.....	i
Introduction.....	ii
Organizational Chart.....	1
Divisions.....	2
Summary.....	6
Tables.....	7

MISSION

The Mission of the Arkansas Workers' Compensation Commission is to administer and enforce Arkansas Workers' Compensation Law as authorized by the Constitution and as enacted by the Legislature.

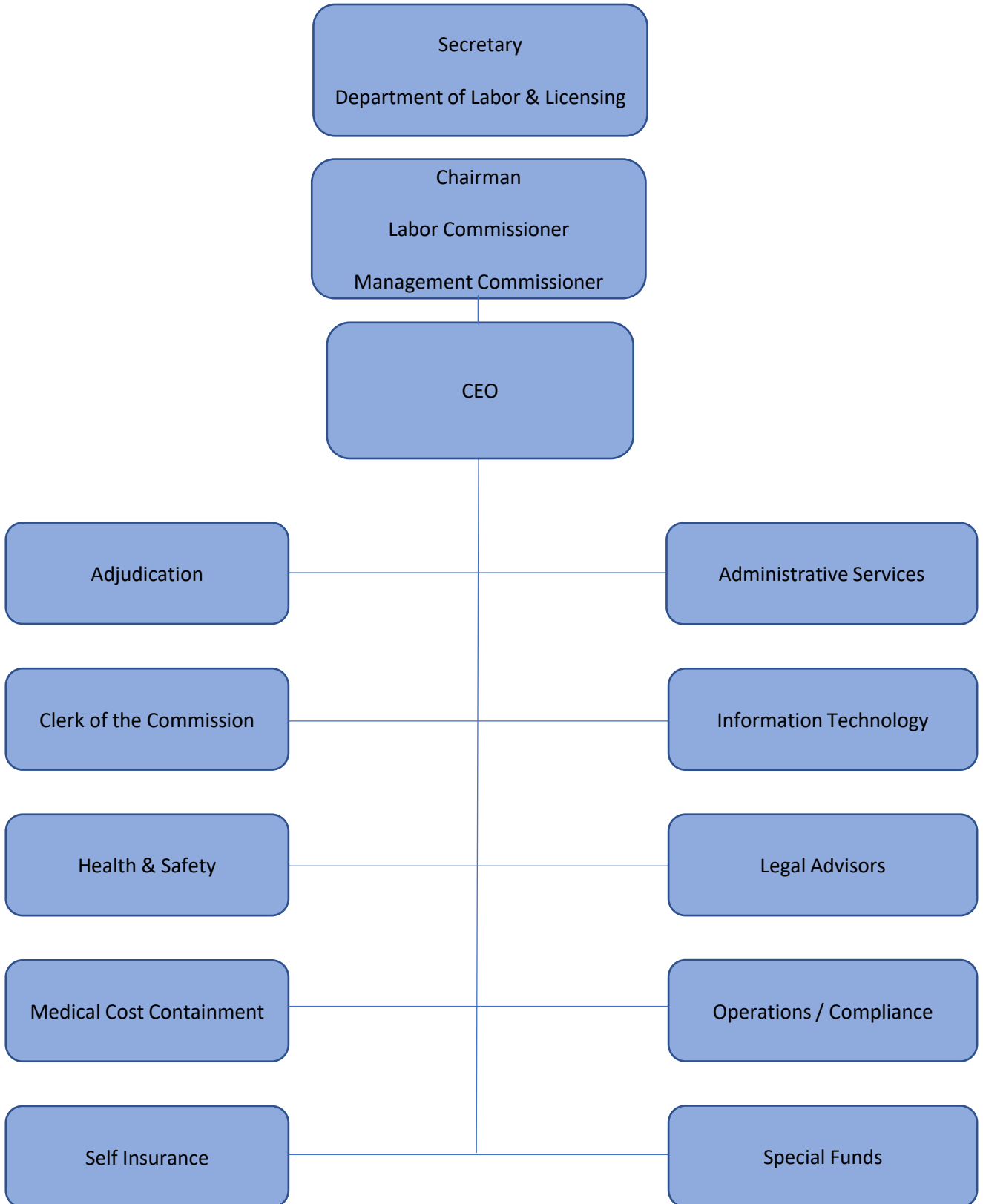
INTRODUCTION

The Arkansas Workers' Compensation Commission (AWCC) and the law it administers was effective December 5, 1940. It is not an insurance company; it enforces the workers' compensation laws to ensure all covered employers secure coverage from commercial carriers or through self-insurance programs. Additionally, the Commission monitors workers' compensation awards to ensure benefit providers make timely payments to eligible claimants. Workers' compensation insurance is directed to the moral, social, and economic benefits of protecting employers, employees, and their dependents from financial burdens imposed by job-related injury and disease.

The extent of disability and the fairness of total compensation can be an item of dispute among the parties involved. Should any dispute arise among the parties involved, the Arkansas Workers' Compensation Commission, through its three Commissioners and a staff of Administrative Law Judges, may adjudicate these cases and impose binding decisions. These decisions can be appealed to the Arkansas Court of Appeals and the Arkansas Supreme Court.

Each Commissioner is appointed by the Governor for a term of six years. One represents the interests of labor, one represents management, and the Chairman acts as a neutral party, representing the interests of the public. The three Commissioners, eight Administrative Law Judges, and three Legal Advisors accomplish all judicial duties. Administrative functions are directed by the Chief Executive Officer.

ARKANSAS WORKERS' COMPENSATION COMMISSION



THE COMMISSION AND ITS DIVISIONS

The Commission

The three-member Commission is responsible for the administration of the workers' compensation law in Arkansas. The Commissioners are appointed by the Governor for a term of six years. One Commissioner represents the interests of labor, another management, and the Chairman acts as a neutral party, representing the interests of the public.

Executive Office

The Chief Executive Officer oversees the administrative and regulatory functions of the Arkansas Workers' Compensation Commission including monitoring all claims and benefit payments to injured workers, processing settlements, lump sum payments, and requests for changes of physicians; ensuring employers maintain required insurance coverage; approving applications of employers to act as self-insurers; and participating in programs to explain the functions of the Commission to the general public. The divisions assisting in carrying out these functions are Adjudication, Administrative Services, Clerk of the Commission, Health and Safety, Information Technology, Legal Advisors, Medical Cost Containment, Operations and Compliance, Self-Insurance, and Special Funds. The Executive Office also coordinates the annual educational conference and ensures the annual and biennial reports are completed and distributed.

Adjudication

The Adjudication Division adjudicates all pending claims for temporary and permanent disability benefits to legitimately injured workers who suffer an injury or disease arising out of and in the course of their employment, together with reasonable and necessary medical expenses. In addition, the Adjudication Division enforces the provision of the Act requiring compliance by employers and may impose fines and sanctions, when appropriate.

The Division is currently staffed by eight (9) Administrative Law Judges (ALJs), together with support staff for the Judges. Five (6) ALJs have offices in Little Rock and three (3) are in Springdale.

Based upon the number of claims filed within each county, the state of Arkansas is currently divided into six (6) geographic districts. Administrative Law Judges travel throughout the state within an assigned district and conduct hearings when disputes arise between injured employees and their employers and/or insurance carriers. Cases are assigned according to the county in which the incident occurred. Pulaski County cases are assigned to all ALJs who have offices in Little Rock as a means of balancing the overall caseload.

Clerk of the Commission

The Clerk's office was established to serve as a conduit for filing, processing and internal routing of pleadings, legal documents and other notices received by the Workers' Compensation Commission. This office is responsible for the assignment of all cases to the Administrative Law Judges and Legal Advisors. In addition, the Clerk maintains the required dockets for cases appealed to the Full Commission, prepares the record/transcripts for lodging with the Court of Appeals, reviews the record on appealed cases, certifies record composition, and certifies copies of documents from the Commission files requested in writing from interested parties.

Administrative Services

Fiscal Section:

The Commission's operations are funded from a premium tax (limited by law to three percent) on workers' compensation premiums paid by insurance companies writing workers' compensation policies, companies qualifying as self-insurers, and all public employers. The Fiscal Section of the Administrative Services Division disburses these funds. All purchasing, accounting, investments, travel, and budget analyses are the responsibility of this division.

Human Resources Section:

The Human Resources section of the Administrative Services Division is responsible for developing, implementing, and monitoring Commission human resource systems and policy, as well as payroll transactions. Job announcements, interviewing and selection of applicants, performance evaluations, leave accounting, quality management, and training are administered by the division. In addition, human resources coordinates with the Department of Labor & Licensing, Office of Personnel Management, provides support to the Chief Executive Officer in the compilation and analysis of Commission personnel budget requests, and counsels with agency management and staff regarding the resolution of sensitive issues associated with performance, discipline, promotion, and selection or other related matters.

Administrative Services also directs the functions of the mail room, security, switchboard, and maintenance for the building.

Information Technology

The IT Division is responsible for the automation of the Commission. The backbone of the system is an in-house developed application that captures data from the inception of a claim and maintains and updates this data throughout the life of the claim. The Division currently maintains databases consisting of reported claims, employers, insurance carriers and adjusters, and various other supporting databases.

Health and Safety

Act 796 of 1993 created the Health and Safety Division that serves as a resource center on safety issues pertinent to employers and employees in Arkansas. Within the Division are the following sections: Accident Prevention Section, Hazardous Employer Section, and Voluntary Program for Drug-Free Workplaces Section.

Legal Advisor

The Legal Advisor Division is a dispute resolution system created to provide legal information and assistance to interested parties who have questions concerning the Arkansas workers' compensation law. The Legal Advisors are attorneys who know both the law and the procedures through which the parties must navigate during the claims process. The Division gives presentations at various conferences and meetings and will make on-site visits to businesses when invited to do so. The Legal Advisors serve as a link between unrepresented claimants and insurance adjusters, and often help resolve problems before they escalate into issues that must be litigated.

Legal Advisors also conduct mediations, legal advisor conferences, and assist the Commission staff.

Medical Cost Containment

The major function of this Division is to oversee the Medical Fee Schedule, which limits the reimbursement to providers for treatment rendered to injured workers and the administration of the Comprehensive Managed Care Program (including requests for changes of physician), which was established by Act 796 of 1993.

Operations and Compliance

This Division's focus is processing compensation claims filed directly with the Commission by parties other than the employer. This Division receives and establishes files for all First Reports of Injury. The Compliance section is the investigative arm of the Commission, making certain all employers under the law have secured payment of compensation. Act 796 of 1993 provided for Certificates of Non-Coverage (CnC), which are processed by the Compliance section. The Division also administers Rule 099.39 (report card monitoring) for the insurance companies, self-insurers and TPA's.

Self-Insurance

The Self-Insurance Division is responsible for the administration and regulation of the Self-Insurance Program in Arkansas. Commission Rule 099.05 governs the operation of the program. The Division processes the applications for individual self-insurance, group self-insurance, group members, and applications for third-party administrators. The Division prepares an annual renewal evaluation on both individual self-insurers and group self-insurers, subject to Commission approval, to renew the Certificate of Authority for Self-Insurance. The Division prepares annual renewal evaluations on third-party administrators, subject to Commission approval, for renewal of their Certificate of Authority to act as a Third-Party Administrator. The Division also collects the workers' compensation premium tax from the self-insurers and group self-insurers.

Special Funds

The Special Funds Division is comprised of two individual funds, the Second Injury Trust Fund and the Death and Permanent Total Disability Trust Fund. The Second Injury Trust Fund was statutorily created to encourage employment of disabled workers by limiting, in the event of subsequent injury, the employer's liability for permanent disability benefits. Act 1415 of 2007 provided that no claims shall be made against the Second Injury Trust Fund on or after January 1, 2008. The Death and Permanent Total Disability Trust Fund pays weekly benefits to permanent and totally disabled workers or dependents of deceased workers after the workers' compensation insurer has paid indemnity liability of a threshold amount up to \$75,000.00 (injuries on or after March 1, 1947, but on or before December 31, 2007) or an amount equal to 325 times the maximum total disability rate at the time of the injury (injuries occurring on or after January 1, 2008, but on or before June 30, 2019). Act 5 of Third Extraordinary Session of 2016, provided that no claims shall be made to the Death and Permanent Total Disability Trust Fund after June 30, 2019. Upon the final payment of the liabilities of the Death and Permanent Total Disability Trust Fund under 11-9-502, the current maximum tax rate of three percent (3%) will change to one and five-tenths percent (1.5%).

COMMISSION SUMMARY

As of June 30, 2023, the Arkansas Workers' Commission had **107** authorized positions, and as of June 30, 2024, the Arkansas Workers' Compensation Commission had **107** authorized positions.

As of June 30, 2023, the maximum weekly benefit rate for total disability was **\$835.00**.

As of June 30, 2024, the maximum weekly benefit rate for total disability was **\$876.00**.

As of June 30, 2023, the maximum weekly benefit rate for permanent partial disability was **\$626.00**.

As of June 30, 2024, the maximum weekly benefit rate for permanent partial disability was **\$657.00**.

There were **5,244** indemnity cases reported in Fiscal Year 2023.

There were **4,959** cases closed in Fiscal Year 2023.

There were **5,046** indemnity cases reported in Fiscal Year 2024.

There were **5,245** cases closed in Fiscal Year 2024.

The Administrative Law Judges were assigned **2,770** cases in Fiscal Year 2023. Of those, **727** were full hearings, **824** were reassignments, **623** were joint petitions, and **596** were joint petition reassignments.

There were **68** appeals to the Full Commission in Fiscal Year 2023.

There were **19** appeals to the Court of Appeals in Fiscal Year 2023.

The Administrative Law Judges were assigned **2,623** cases in Fiscal Year 2024. Of those, **785** were full hearings, **654** were reassignments, **641** were joint petitions, and **543** were joint petition reassignments.

There were **52** appeals to the Full Commission in Fiscal Year 2024.

There were **22** appeals to the Court of Appeals in Fiscal Year 2024.

The Legal Advisors conducted **50** mediation conferences in Fiscal Year 2023.

The Legal Advisors conducted **32** mediation conferences in Fiscal Year 2024.

TABLES

REPORTED ACCIDENTS BY MONTH
FISCAL YEAR 2023

Month	Reported Cases	Closed Cases
JULY	443	252
AUGUST	517	591
SEPTEMBER	472	411
OCTOBER	445	377
NOVEMBER	417	371
DECEMBER	389	455
JANUARY	396	394
FEBRUARY	440	463
MARCH	470	430
APRIL	379	350
MAY	474	441
JUNE	402	424
TOTALS	5,244	4,959

REPORTED ACCIDENTS BY MONTH
FISCAL YEAR 2024

Month	Reported Cases	Closed Cases
JULY	367	417
AUGUST	506	473
SEPTEMBER	414	424
OCTOBER	460	436
NOVEMBER	416	393
DECEMBER	323	409
JANUARY	432	472
FEBRUARY	471	464
MARCH	390	441
APRIL	432	426
MAY	417	414
JUNE	418	476
TOTALS	5,046	5,245

CASES BY COUNTY**FISCAL YEAR 2023**

COUNTY	REPORTED CASES	CLOSED CASES
ARKANSAS	37	30
ASHLEY	32	31
BAXTER	76	54
BENTON	365	357
BOONE	69	72
BRADLEY	24	25
CALHOUN	3	8
CARROLL	34	33
CHICOT	14	10
CLARK	35	27
CLAY	20	18
CLEBURNE	30	39
CLEVELAND	9	4
COLUMBIA	35	37
CONWAY	18	17
CRAIGHEAD	187	194
CRAWFORD	91	78
CRITTENDEN	106	77
CROSS	23	29
DALLAS	14	10
DESHA	23	18
DREW	42	34
FAULKNER	195	195
FRANKLIN	19	24
FULTON	5	11
GARLAND	148	164
GRANT	9	10

CASES BY COUNTY**FISCAL YEAR 2023**

COUNTY	REPORTED CASES	CLOSED CASES
GREENE	57	64
HEMPSTEAD	9	6
HOT SPRING	51	46
HOWARD	24	19
INDEPENDENCE	78	67
IZARD	9	8
JACKSON	19	19
JEFFERSON	154	141
JOHNSON	22	21
LAFAYETTE	9	5
LAWRENCE	13	15
LEE	16	3
LINCOLN	34	22
LITTLE RIVER	12	10
LOGAN	21	26
LONOKE	64	66
MADISON	10	18
MARION	28	31
MILLER	84	71
MISSISSIPPI	82	84
MONROE	4	5
MONTGOMERY	7	7
NEVADA	12	9
NEWTON	4	4
NO COUNTY	48	22
OUACHITA	28	35
OUT OF STATE	260	297

CASES BY COUNTY

FISCAL YEAR 2023

COUNTY	REPORTED CASES	CLOSED CASES
PERRY	5	6
PHILLIPS	24	22
PIKE	38	39
POINSETT	21	17
POLK	24	25
POPE	110	104
PRAIRIE	10	8
PULASKI	1,081	959
RANDOLPH	23	27
SALINE	109	109
SCOTT	11	10
SEARCY	3	3
SEBASTIAN	213	228
SEVIER	8	4
SHARP	18	25
ST FRANCIS	37	37
STONE	8	9
UNION	70	65
VAN BUREN	26	16
WASHINGTON	423	382
WHITE	120	102
WOODRUFF	16	14
YELL	24	21
TOTALS:	5,244	4,959

CASES BY COUNTY

FISCAL YEAR 2024

COUNTY	REPORTED CASES	CLOSED CASES
ARKANSAS	50	42
ASHLEY	25	25
BAXTER	59	74
BENTON	363	345
BOONE	74	71
BRADLEY	20	21
CALHOUN	5	4
CARROLL	31	30
CHICOT	11	12
CLARK	27	40
CLAY	18	19
CLEBURNE	31	30
CLEVELAND	8	9
COLUMBIA	28	28
CONWAY	26	22
CRAIGHEAD	186	203
CRAWFORD	71	74
CRITTENDEN	94	112
CROSS	23	33
DALLAS	11	14
DESHA	25	22
DREW	28	27
FAULKNER	200	190
FRANKLIN	15	20
FULTON	9	8
GARLAND	151	172
GRANT	26	24

CASES BY COUNTY**FISCAL YEAR 2024**

COUNTY	REPORTED CASES	CLOSED CASES
GREENE	50	50
HEMPSTEAD	6	11
HOT SPRING	50	48
HOWARD	14	20
INDEPENDENCE	84	79
IZARD	21	7
JACKSON	28	21
JEFFERSON	146	162
JOHNSON	17	20
LAFAYETTE	9	2
LAWRENCE	16	15
LEE	13	12
LINCOLN	25	25
LITTLE RIVER	14	15
LOGAN	35	34
LONOKE	83	77
MADISON	17	9
MARION	14	18
MILLER	62	85
MISSISSIPPI	84	91
MONROE	8	8
MONTGOMERY	11	7
NEVADA	5	10
NEWTON	3	1
NO COUNTY	40	33
OUACHITA	36	35
OUT OF STATE	179	218

CASES BY COUNTY

FISCAL YEAR 2024

COUNTY	REPORTED CASES	CLOSED CASES
PERRY	5	5
PHILLIPS	26	37
PIKE	55	56
POINSETT	13	29
POLK	18	25
POPE	110	109
PRAIRIE	8	9
PULASKI	1,053	1,081
RANDOLPH	27	19
SALINE	121	116
SCOTT	10	5
SEARCY	6	4
SEBASTIAN	212	187
SEVIER	12	10
SHARP	18	21
ST FRANCIS	39	53
STONE	15	10
UNION	54	76
VAN BUREN	22	25
WASHINGTON	382	427
WHITE	111	119
WOODRUFF	17	15
YELL	27	23
TOTALS:	5,046	5,245

CASES BY INDUSTRY**FISCAL YEAR 2023**

INDUSTRY	REPORTED CASES	CLOSED CASES	DEATH CASES
ADMIN. OF HUMAN RESOURCES	0	5	0
AGRICULTURAL PRODUCTION-CROPS	0	2	0
AGRICULTURAL PRODUCTION-LIVESTOCK	4	6	0
AGRICULTURAL SERVICES	2	15	1
AMUSEMENT & RECREATION SERV	2	7	0
APPAREL AND ACCESSORY STORES	2	0	0
APPAREL AND OTHER TEXTILE	1	3	0
AUTO REPAIR,SERVICES&PARKING	0	5	0
AUTOMOTIVE DEALERS & SERVICE STATION	10	22	0
BUILDING MATERIALS &GARDEN SUPP	13	27	0
BUSINESS SERVICES	18	28	0
CHEMICALS AND ALLIED PRODUCTS	3	5	0
COMMUNICATIONS	3	3	0
CONSTRUCTION-SPECIAL TRADE CONTRAC	23	52	1
DEPOSITORY INSTITUTIONS	2	2	0
EATING AND DRINKING PLACES	16	43	0
EDUCATIONAL SERVICES/OLD CODE	4	85	0
ELECTRIC, GAS & SANITARY SERVICES	3	19	0
ELECTRONIC & OTHER ELECTRICAL EQUIPM	1	14	0
ENGINEERING & MANAGEMENT SERV	6	7	0
EXECUTIVE,LEGISLATIVE & GENERAL	0	4	0
FABRICATED METAL PRODUCTS	8	22	0
FOOD AND KINDRED PRODUCTS	17	48	0
FOOD STORES	4	14	0
FURN. & HOMEFURNISHING STORES	3	1	0
FURNITURE AND FIXTURES	0	7	0
GENERAL BUILDING CONTRACTORS	4	16	0
GENERAL MERCHANDISE STORES	6	41	0
HEALTH SERVICES	12	78	0
HEAVY CONSTRUCTION EXCL BUILDINGS	6	33	0
HOTELS & OTHER LODGING PLACES	3	9	1
INDUSTRIAL MACHINERY & EQUIP	5	15	0

CASES BY INDUSTRY**FISCAL YEAR 2023**

INDUSTRY	REPORTED CASES	CLOSED CASES	DEATH CASES
INSURANCE AGTS, BROKERS & SERV	3	2	0
INSURANCE CARRIERS	1	0	0
JUSTICE,PUBLIC ORDER & SAFETY	3	44	0
LEATHER AND LEATHER PRODUCTS	0	2	0
LOCAL & INTERURBAN PASSENGER TRANSP	0	2	0
LUMBER & WOOD PRODUCTS	9	32	1
MEAS ANALYZ & CONTR INSTRUMENTS	3	2	0
MEMBERSHIP ORGANIZATIONS	0	3	0
METAL MINING	1	2	0
MISCELLANEOUS MFG INDUSTRIES	2	3	0
MISCELLANEOUS REPAIR SERVICES	0	5	0
MISCELLANEOUS RETAIL	0	4	0
MOTION PICTURES	1	1	0
NONCLASSIFIABLE ESTABLISHMENTS	4,821	3,836	59
NONMETALLIC MINERALS,EXCEPT FUELS	1	1	0
OIL AND GAS EXTRACTION	1	3	0
PAPER AND ALLIED PRODUCTS	2	20	0
PERSONAL SERVICES	0	2	0
PETROLEUM AND COAL PRODUCTS	1	3	0
PRIMARY METAL INDUSTRIES	2	11	0
PRINTING AND PUBLISHING	0	5	0
RAILROAD TRANSPORTATION	1	0	0
REAL ESTATE	3	8	0
RUBBER & MISC. PLASTICS PRODUCTS	8	9	0
SECURITY AND COMMODITY BROKERS	2	0	0
SOCIAL SERVICES	1	6	0
STONE, CLAY & GLASS & CONCRETE PRODU	5	12	0
TEXTILE MILL PRODUCTS	0	1	0
TRANSPORTATION BY AIR	0	2	0
TRANSPORTATION EQUIPMENT	10	12	0
TRUCKING & WAREHOUSING	140	210	1
U.S. POSTAL SERVICE	0	2	0

CASES BY INDUSTRY

FISCAL YEAR 2023

INDUSTRY	REPORTED CASES	CLOSED CASES	DEATH CASES
UNKNOWN	7	8	0
WATER TRANSPORTATION	0	1	0
WHOLESALE TRADE-DURABLE GOODS	16	36	0
WHOLESALE TRADE-NONDURABLE GOODS	19	31	0
TOTALS:	5,244	4,959	64

CASES BY INDUSTRY

FISCAL YEAR 2024

INDUSTRY	REPORTED CASES	CLOSED CASES	DEATH CASES
ADMIN. OF HUMAN RESOURCES	0	2	0
AGRICULTURAL PRODUCTION-CROPS	0	2	0
AGRICULTURAL PRODUCTION-LIVESTOCK	5	2	0
AGRICULTURAL SERVICES	2	5	0
AMUSEMENT & RECREATION SERV	0	5	0
APPAREL AND ACCESSORY STORES	3	1	0
APPAREL AND OTHER TEXTILE	0	2	0
AUTO REPAIR,SERVICES&PARKING	0	6	0
AUTOMOTIVE DEALERS & SERVICE STATION	5	3	0
BUILDING MATERIALS &GARDEN SUPP	0	8	0
BUSINESS SERVICES	16	24	0
CHEMICALS AND ALLIED PRODUCTS	4	5	0
COMMUNICATIONS	6	3	0
CONSTRUCTION-SPECIAL TRADE CONTRAC	14	44	2
DEPOSITORY INSTITUTIONS	0	1	0
EATING AND DRINKING PLACES	14	30	0
EDUCATIONAL SERVICES/OLD CODE	2	76	0
ELECTRIC, GAS & SANITARY SERVICES	0	21	0
ELECTRONIC & OTHER ELECTRICAL EQUIPM	1	10	0
ENGINEERING & MANAGEMENT SERV	0	2	0
ENVIRONMENTAL QUALITY & HOUSING	0	2	0
EXECUTIVE,LEGISLATIVE & GENERAL	0	2	0
FABRICATED METAL PRODUCTS	3	16	0
FOOD AND KINDRED PRODUCTS	10	33	0
FOOD STORES	13	12	0
FORESTRY	1	1	0
FURN. & HOMEFURNISHING STORES	0	4	0
FURNITURE AND FIXTURES	0	1	0
GENERAL BUILDING CONTRACTORS	4	12	0
GENERAL MERCHANDISE STORES	1	13	0
HEALTH SERVICES	26	79	0
HEAVY CONSTRUCTION EXCL BUILDINGS	4	21	1

CASES BY INDUSTRY

FISCAL YEAR 2024

INDUSTRY	REPORTED CASES	CLOSED CASES	DEATH CASES
HOLDING & OTHER INVESTMENT OFFICE	1	1	0
HOTELS & OTHER LODGING PLACES	2	4	0
INDUSTRIAL MACHINERY & EQUIP	5	6	0
INSURANCE AGTS, BROKERS & SERV	3	2	0
INSURANCE CARRIERS	1	1	0
JUSTICE,PUBLIC ORDER & SAFETY	0	47	0
LEGAL SERVICES	1	0	0
LOCAL & INTERURBAN PASSENGER TRANSP	1	4	0
LUMBER & WOOD PRODUCTS	10	15	1
MEAS ANALYZ & CONTR INSTRUMENTS	0	1	0
MEMBERSHIP ORGANIZATIONS	0	2	0
METAL MINING	0	1	0
MISCELLANEOUS MFG INDUSTRIES	0	5	0
MISCELLANEOUS REPAIR SERVICES	1	1	0
MISCELLANEOUS RETAIL	0	5	0
NONCLASSIFIABLE ESTABLISHMENTS	4,787	4,472	41
NONMETALLIC MINERALS,EXCEPT FUELS	2	2	0
OIL AND GAS EXTRACTION	1	6	0
PAPER AND ALLIED PRODUCTS	1	9	0
PERSONAL SERVICES	0	2	0
PETROLEUM AND COAL PRODUCTS	2	1	0
PRIMARY METAL INDUSTRIES	2	8	0
RAILROAD TRANSPORTATION	0	1	0
REAL ESTATE	0	2	0
RUBBER & MISC. PLASTICS PRODUCTS	0	6	0
SECURITY AND COMMODITY BROKERS	0	2	0
SERVICES, NEC	0	1	0
SOCIAL SERVICES	1	4	0
STONE, CLAY & GLASS & CONCRETE PRODU	1	12	0
TRANSPORTATION BY AIR	0	2	0
TRANSPORTATION EQUIPMENT	3	9	0
TRUCKING & WAREHOUSING	60	119	0

CASES BY INDUSTRY

FISCAL YEAR 2024

INDUSTRY	REPORTED CASES	CLOSED CASES	DEATH CASES
U.S. POSTAL SERVICE	1	0	0
UNKNOWN	6	9	0
WHOLESALE TRADE-DURABLE GOODS	7	19	0
WHOLESALE TRADE-NONDURABLE GOODS	13	16	0
TOTALS:	5,046	5,245	45

PART OF BODY INJURED**FISCAL YEAR 2023**

PART OF BODY INJURED	REPORTED CASES	CLOSED CASES
ABDOMEN (INCLUDING GROIN)	112	110
ANKLE	336	292
ARTIFICIAL APPLIANCE	1	0
BRAIN	52	47
BUTTOCKS	10	8
CHEST INC: RIBS,STERNUM,AND SOFT TISS	58	63
DISC (NECK AREA)	28	18
DISC (TRUNK AREA)	4	8
EAR(S)	4	4
ELBOW	105	99
EYE(S)	33	40
FACIAL BONES	24	16
FINGER(S)	336	302
FOOT	215	198
GREAT TOE	17	6
HAND	189	144
HEART	13	9
HIP	73	59
INTERNAL ORGANS	3	5
KNEE	560	566
LOW BACK AREA INC:LUMBAR & LUMBO-SAC	419	453
LOWER ARM	127	124
LOWER LEG	141	128
LUMBAR AND/OR SACRAL VERTEBRA	55	35
LUNGS	14	14
MOUTH	0	1
MULT SYSTEMS AND MULT BODY SYSTEMS	127	151
MULTIPLE BODY PARTS INJURY	794	697
MULTIPLE HEAD INJURY	14	28
MULTIPLE LOWER EXTREMITIES INJURY	47	45
MULTIPLE NECK INJURY	9	4

PART OF BODY INJURED**FISCAL YEAR 2023**

PART OF BODY INJURED	REPORTED CASES	CLOSED CASES
MULTIPLE TRUNK INJURY	23	18
MULTIPLE UPPER EXTREMITIES	43	71
NO PHYSICAL INJURY	9	7
NOSE	13	11
OTHER FACIAL SOFT TISSUE	12	9
PELVIS	12	10
SACRUM AND COCCYX	6	5
SHOULDER(S)	577	550
SKULL	84	65
SOFT TISSUE	11	20
SPINAL CORD	2	2
TEETH	7	4
THIGH	35	37
THUMB	71	60
TOE(S)	30	31
UNDEFINED	28	14
UNKNOWN - INSUFFICIENT INFORMATION	14	10
UNSPEC	2	7
UPPER ARM (INC: CLAVICLE AND SCAPULA)	112	92
UPPER BACK AREA (THORACIC AREA)	38	44
VERTEBRAE	8	8
WRIST	170	201
WRIST(S) & HAND(S)	17	9
TOTALS:	5,244	4,959

PART OF BODY INJURED**FISCAL YEAR 2024**

PART OF BODY INJURED	REPORTED CASES	CLOSED CASES
ABDOMEN (INCLUDING GROIN)	114	110
ANKLE	303	303
BRAIN	36	48
BUTTOCKS	6	8
CHEST INC: RIBS,STERNUM,AND SOFT TISS	69	65
DISC (NECK AREA)	16	23
DISC (TRUNK AREA)	3	6
EAR(S)	2	3
ELBOW	85	79
EYE(S)	24	31
FACIAL BONES	27	17
FINGER(S)	302	307
FOOT	207	202
GREAT TOE	18	21
HAND	144	180
HEART	7	9
HIP	59	69
INTERNAL ORGANS	6	12
KNEE	618	602
LOW BACK AREA INC:LUMBAR & LUMBO-SAC	397	444
LOWER ARM	109	112
LOWER LEG	166	142
LUMBAR AND/OR SACRAL VERTEBRA	39	41
LUNGS	30	32
MOUTH	5	1
MULT SYSTEMS AND MULT BODY SYSTEMS	130	165
MULTIPLE BODY PARTS INJURY	712	845
MULTIPLE HEAD INJURY	14	12
MULTIPLE LOWER EXTREMITIES INJURY	48	55
MULTIPLE NECK INJURY	8	10
MULTIPLE TRUNK INJURY	29	24

PART OF BODY INJURED**FISCAL YEAR 2024**

PART OF BODY INJURED	REPORTED CASES	CLOSED CASES
MULTIPLE UPPER EXTREMITIES	55	56
NO PHYSICAL INJURY	8	7
NOSE	11	10
OTHER FACIAL SOFT TISSUE	7	13
PELVIS	8	16
SACRUM AND COCCYX	7	8
SHOULDER(S)	575	557
SKULL	94	74
SOFT TISSUE	15	27
SPINAL CORD	3	2
SPINAL CORD	0	1
TEETH	3	2
THIGH	21	20
THUMB	65	70
TOE(S)	33	19
UNDEFINED	23	14
UNKNOWN - INSUFFICIENT INFORMATION	13	10
UNSPEC	4	2
UPPER ARM (INC: CLAVICLE AND SCAPULA)	114	108
UPPER BACK AREA (THORACIC AREA)	55	49
VERTEBRAE	6	6
WRIST	167	169
WRIST(S) & HAND(S)	26	27
TOTALS:	5,046	5,245

CASES BY EMPLOYER TYPE

7/1/2022 - 6/30/2023

Cases Reported

Employer Type: Private	
Compensable	3,696
Deaths	50
Totals	3,746
Employer Type: Self Insured	
Compensable	728
Deaths	8
Totals	736
Employer Type: Self Insured Group	
Compensable	756
Deaths	6
Totals	762
TOTAL THIS REPORT:	5,244

Cases Closed

Employer Type Private	
TTD	2,432
TPD	67
PPD	705
PTD	17
Death	62
Totals	3,283
Employer Type Public	
PTD	1
Death	2
Totals	3
Employer Type Self Insured	
TTD	624
TPD	14
PPD	207
PTD	4
Death	8
Totals	857
Employer Type Self Insured Group	
TTD	495
TPD	10
PPD	290
PTD	8
Death	13
Totals	816
TOTAL THIS REPORT:	4,959

CASES BY EMPLOYER TYPE

7/1/2023 - 6/30/2024

Cases Reported

Employer Type: Private	
Compensable	3,640
Deaths	34
Totals	3,674
Employer Type: Self Insured	
Compensable	634
Deaths	4
Totals	638
Employer Type: Self Insured Group	
Compensable	727
Deaths	7
Totals	734
TOTAL THIS REPORT:	5,046

Cases Closed

Employer Type Private	
TTD	2,685
TPD	67
PPD	811
PTD	17
Death	82
Second Injury Fund	2
Totals	3,664
Employer Type Public	
TTD	1
Death	1
Totals	2
Employer Type Self Insured	
TTD	506
TPD	10
PPD	232
PTD	10
Death	10
Second Injury Fund	1
Totals	769
Employer Type Self Insured Group	
TTD	495
TPD	6
PPD	292
PTD	4
Death	13
Totals	810
TOTAL THIS REPORT:	5,245

**FATALITIES BY AGE AND SEX
FISCAL YEAR 2023**

Age In Years	Female	Male	Unknown	Total
14-19	0	2	0	2
20-29	3	13	0	16
30-39	0	5	0	5
40-49	1	11	0	12
50-59	0	15	0	15
60-69	1	11	0	12
70-79	1	1	0	2
Unknown	0	0	0	0
TOTAL	6	58	0	64
TOTAL FATALITIES FOR FY 2023 - 64				

**FATALITIES BY AGE AND SEX
FISCAL YEAR 2024**

Age In Years	Female	Male	Unknown	Total
14-19	0	0	0	0
20-29	0	3	0	3
30-39	0	7	0	7
40-49	0	10	0	10
50-59	1	11	0	12
60-69	0	9	0	9
70-79	1	3	0	4
Unknown	0	0	0	0
TOTAL	2	43	0	45
TOTAL FATALITIES FOR FY 2024 - 45				

EXPENDITURE REPORT - COMPENSABLE CASES

FISCAL YEAR 2023

Expenditure	Private	Self-Ins.	Public	Total
COMPENSATION	\$30,219,331.86	\$22,773,898.31	\$12,849.57	\$53,006,079.74
LUMP SUM	\$87,969.90	\$235,482.65	\$0.00	\$323,452.55
JOINT PETITION	\$17,564,361.85	\$4,922,676.43	\$0.00	\$22,487,038.28
ATTORNEY FEES	\$5,781,789.59	\$2,607,967.30	\$3,334.00	\$8,393,090.89
OTHER 1	\$2,937,712.42	\$1,595,032.80	\$0.00	\$4,532,745.22
HOSPITAL	\$13,390,989.81	\$4,479,099.30	\$0.00	\$17,870,089.11
MEDICAL	\$41,765,229.99	\$21,062,766.29	\$14,852.28	\$62,842,848.56
MEDICINE	\$1,780,921.95	\$1,049,175.72	\$68.37	\$2,830,166.04
FUNERAL	\$123,150.39	\$45,526.19	\$0.00	\$168,676.58
REHABILITATION	\$2,503,848.30	\$255,814.43	\$0.00	\$2,759,662.73
OTHER 2	\$7,316,339.09	\$2,736,087.79	\$672.26	\$10,053,099.14
TOTAL	\$123,471,645.15	\$61,763,527.21	\$31,776.48	\$185,266,948.84

EXPENDITURE REPORT - COMPENSABLE CASES

FISCAL YEAR 2024

Expenditure	Private	Self-Ins.	Public	Total
COMPENSATION	\$37,164,069.99	\$14,939,842.13		\$52,103,912.12
LUMP SUM	\$120,606.85	\$87,255.02		\$207,861.87
JOINT PETITION	\$19,178,077.48	\$4,002,059.56		\$23,180,137.04
ATTORNEY FEES	\$6,629,505.52	\$1,937,526.62		\$8,567,032.14
OTHER 1	\$3,090,616.62	\$975,308.33		\$4,065,924.95
HOSPITAL	\$12,937,510.49	\$4,204,762.90		\$17,142,273.39
MEDICAL	\$136,077,598.54	\$21,079,515.63		\$157,157,114.17
MEDICINE	\$1,540,110.03	\$1,011,154.58		\$2,551,264.61
FUNERAL	\$125,044.89	\$22,067.86		\$147,112.75
REHABILITATION	\$1,492,674.39	\$184,317.34		\$1,676,991.73
OTHER 2	\$8,193,035.23	\$2,244,691.92		\$10,437,727.15
TOTAL	\$226,548,850.03	\$50,688,501.89		\$277,237,351.92

MEDICAL ONLY EXPENDITURE REPORT
FISCAL YEAR 2023

Public	Self-Insurer	Private	Total
\$0.00	\$9,313,886.34		

MEDICAL ONLY EXPENDITURE REPORT
FISCAL YEAR 2024

Public	Self-Insurer	Private	Total
	\$9,894,564.66		